



# clinical networks

Issue 3, December 2011



Welcome to the last MidCentral District Health Board (MDHB) Clinical Network newsletter for 2011. We have had a busy year establishing the overarching Transitional Steering Group (TSG) as well as three underpinning District Groups. However, we will not be resting on our laurels as we look to develop an Older Person District Group in early 2012 and aim to progress discussions around creating an Elective Services District Group as well. Meantime, read on to find out about the work that has kept all District Group members busy – the hosting of open community-based forums...

But first – a quick round up of TSG achievements for 2011. The TSG is the governance group for the network structure and comprises senior clinicians, managers, Maori and community representatives from across the region. Although this Group has been in existence for not quite a year it has:

- Approved its own terms of reference
- Developed and approved terms of reference for District Groups
- Supported the development of District Groups and their hosting of open forums
- Reviewed and developed a response to the DHB's clinical governance paper
- Considered the monitoring and evaluation of the Network structure (an ongoing item)
- Developed a reimbursement policy and procedure for travel and parking costs associated with Network participation
- Provided six monthly reporting to the MDHB Board as well as Manawhenua Hauora.

## Looking ahead to 2012

### Work for 2012 includes:

- Supporting the establishment for up to another three District Groups in the year and the activity associated with this (eg forums)
- Sign off on evaluation and monitoring processes.
- Approve work plans for the three existing District Groups.

## Transitional Steering Group (TSG)

The Chair of the TSG, Dr Alistair Watson, has noted "This has been a busy establishment year and I would like to thank all TSG members for their ongoing support and commitment to building the Network structure for our DHB. Positive activity is happening now but I believe in 2-3 years we will be amazed at the outcomes produced for our community through the synergy created by clinicians, managers, clients and sector agencies working together to improve health services for our region."

## Child Health District Group (CHDG)

The Child Health/Tamariki Ora District Group hosted an open forum at the beginning of October in the new Youth Space. About 50 people attended the evening event which used a world café approach and required groups to consider what aspects of child health work well currently and where improvement effort could be focused. Those attending all worked within a child and youth sphere – teachers, pre-school educators (including Kohunga Reo), staff from Maori/iwi providers, clinicians etc. While no families/whanau attended (given the time of night) a two month long survey had previously been undertaken by Group members to learn from families what was important to them and how child health services could be more effectively provided. Additionally, a Needs Assessment undertaken in Horowhenua has been completed and will also be used to help give direction to the Group.

From this activity a work plan is currently being drafted. Emphasis has been placed on the better sharing of information as well as improved collaboration between primary and secondary care. When endorsed by the TSG a copy of the work plan will be placed on the MDHB website so watch this space!



Child health/tamariki ora forum, October 3<sup>rd</sup> 2011.

**Working together for better health**

Supported by MidCentral District Health Board

## Mental Health and Addictions District Group

This Group had a very busy November! They hosted five open forums around the region hearing from those attending as to what changes would make a difference to the lives of consumers and families/whanau. Crisis respite was a common theme that emerged as was the sharing of information and better collaboration between primary and secondary care. Suicide prevention and youth alcohol abuse were also of concern. A draft work plan arising from these forums is in progress and again will be placed on the MDHB website when approved by the TSG.

## Cancer District Group

This is the 'youngest' Group in the network structure to date, having only recently been formed. However members were up for the challenge of holding an open forum before the year's end and so mid November saw the Group hosting an evening event at Addis House. The forum was opened with patient stories - two cancer survivors provided touching accounts of their journeys. Attendees were then encouraged to move around various stations within the venue, each focusing on different aspects of care

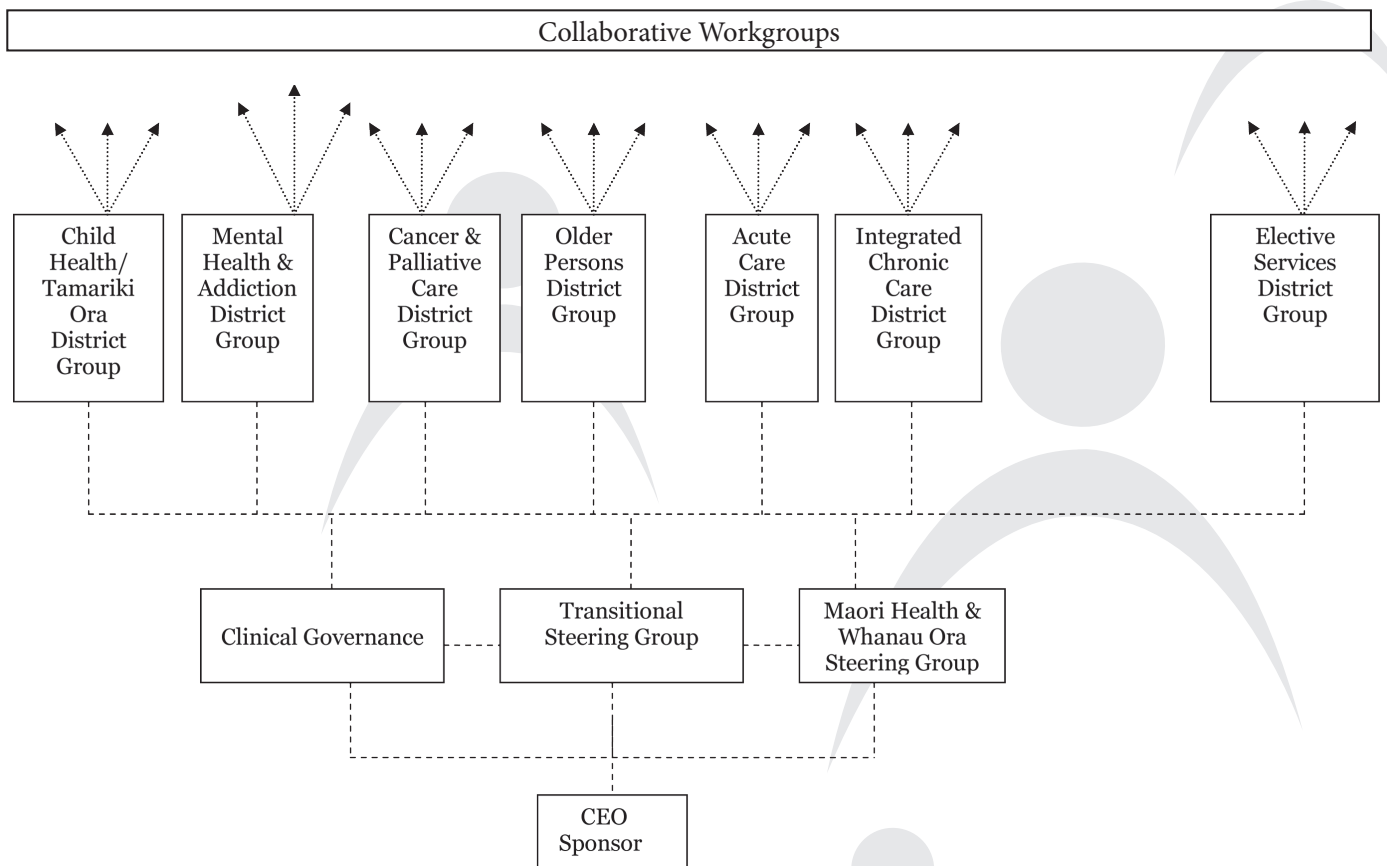
including prevention, early detection, diagnosis, treatment and the Maori cancer journey. Discussion allowed for improvement ideas to be shared and documented and the Group is now reviewing these with a view to selecting one per aspect to progress.

## Thankyou

On that note we would like to thank all District Group members for their hard work this year in helping us develop the Clinical Network structure, especially in terms of hosting forums which as evening events meant extra work for those involved. This has been much appreciated and we look forward to formalising the resulting work plans next year and to seeing some outcomes over the up-coming 12 months. We would also like to acknowledge all those who attended the forums as part of the audience, providing their views and suggestions as to how services can be made more effective and efficient. Have a safe and merry Christmas everyone!

***If you would like to register your interest in a particular district group or would like to be on a Clinical Network mailing list please email: Katherine.gibbs@midcentraldhb.govt.nz.***

## Conceptual Framework for MidCentral District's Clinical Networks:



**Working together for better health**

Supported by MidCentral District Health Board