



MINISTRY OF SOCIAL DEVELOPMENT

Te Manatū Whakahiato Ora



Work and Income

Te Hiranga Tangata

A service of the Ministry of Social Development

Working New Zealand: Health and Disability Focused Support



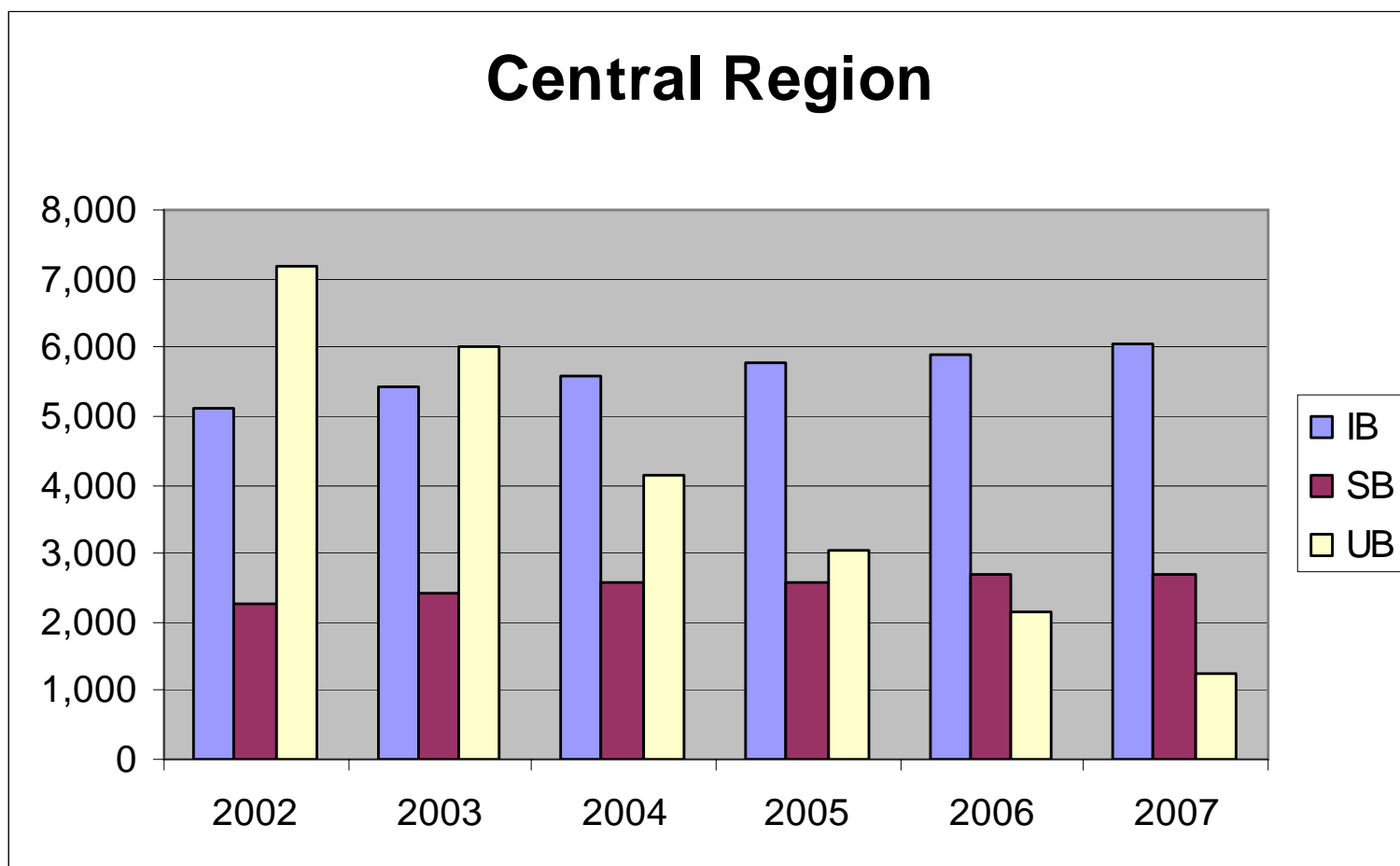
Work and Income
Te Hiranga Tangata

A service of the Ministry of Social Development

Working New Zealand's core proposition is
“Most people want to work and can
with the right support”



Central Region Trend





Work Development Support and Community Support

Initiatives to assist Disabled People and People with Ill-Health

Application Process

- 1** Obtaining the information we need for determining eligibility and service needs

Case Management

- 2**
 - Training and qualifications for case managers
 - New roles to support the new way of working

Relationships

- 3** Strengthening relationships with health professionals, practitioners and service providers

Services

- 4** Services based on client need and alignment across health and disability sectors



Work and Income
Te Hiranga Tangata

A service of the Ministry of Social Development



A service of the Ministry of Social Development

Work Development Planning

Case manager and client working together

- using the information from the medical certificate
- setting goals toward work
- achieving goals through ongoing engagement
- accessing employment related services such as the Job Search Service
- identifying appropriate health and rehabilitation services



Contracted Services

- **Mild to Moderate Mental Health Service**
 - GP Consultation to identify need
 - K10 Assessment
 - Intervention planning (packages of care)
 - Walk alongside client during treatment
 - End of care K10 Assessment

 - Referral onto other appropriate services





PATHS

Providing Access to Health Solutions

Helping Sickness or Invalids Beneficiaries reach their employment goals by removing or minimising health barriers

This is achieved through improved access to a wide range of health, employment and community services.



Work and Income
Te Hiranga Tangata



Services being developed

- **Awaiting Treatment**
 - Access to specialist medical assessments, treatment programmes or elective surgery
- **Pain Management Service**
 - for people that are prevented from working due to a pain issue. These people will access ACC's early intervention pain management service from ACC;s trained providers.



In conclusion:

Helping those that want to work
to achieve this goal



Work and Income
Te Hiranga Tangata

A service of the Ministry of Social Development