

clinical networks

Issue 1 March 2011



Hello and welcome to our first Clinical Network newsletter. It is designed to let people working within the MidCentral District Health Board (MDHB) health sector know about the progress being made to establish a clinical network structure in our region. Clinical networks provide a formal structure to bring together individuals from different organisations (and usually across a clinical continuum of care), to focus on improving health outcomes and the experiences of patients and their families in using a health service. These networks allow for the forming of effective partnerships to: share information, review clinical management, enhance communication and processes, and ensure equitable and ongoing provision of safe, effective services occurs as close to the patient as possible.

The clinical network newsletter will be a quarterly publication which will let you follow the progress being made to create and maintain the structure and the work programmes of those involved within it. So, read on and find out how you can become involved.

Overview

Work to form the foundations of clinical networks has been led by Dr Alistair Watson and follows on from the District Management Group (DMG) and Reference Group processes which were previously used to guide service improvement within the DHB. This change has come about because evidence and international research has shown that successful services support clinical networks as a viable way of ensuring clinicians lead and drive service improvement, and that this occurs in partnership with organisations and consumers.

The network structure for MDHB is organised into four tiers which are; the collaborative workgroup, district groups, combined steering group (currently a transitional steering group), and the CEO sponsor. A pictorial depiction is shown overleaf. The first district groups to be formed are the child health, the mental health and addictions and the cancer district groups. Each of these groups will hold an annual public forum to discuss local issues and future projects. Overseeing the work of the district groups is the transitional steering group.

Transitional Steering Group (TSG)

The role of this group is to assist MDHB create and maintain a clinical network structure ensuring that clinicians and consumers (and their family/whanau) are the core of health service

development and improvement. Members include; former DMG and Reference Group Chairs, Clinical Leads for the PHO 'Better Sooner More Convenient' business case, and senior managers from the DHB and Compass Health. There is also representation from Manawhenua Hauora and Maori health. It is also planned that there will be community involvement. Once the network structure is more fully in place the TSG will dissolve with a move toward establishing the longer term Combined Steering Group. Membership will be reviewed at this point.

Work to date for the TSG has focused on finalising the child health district group terms of reference and the nomination and selection process used to establish this group. These documents and systems will be the template for the subsequent district groups yet to come. The TSG has also been busy creating and signing off its own terms of reference and finalising a communications plan.

Child Health District Group (CHDG)

The TSG selected Dr Jeff Brown (Clinical Director Paediatric Service) as the provisional Chair of the CHDG. He has been ably supported in establishing the CHDG by the Child and Youth Health Funding Portfolio Manager, Barb Bradnock. The work of this group will be focused on improving the provision of health services to children and their families/whanau. Calls for nominations for joining the CHDG were made across the district from amongst those people and organisations who are focused on child health outcomes. Applications closed at the end of February and the selection panel (approved by the TSG) were delighted with the calibre of the 22 individuals who either put themselves forward or who were put forward by others. From this pool of respected people 13 were chosen to join the child health district group. Their first meeting is planned for May 22nd.

One of the first tasks of the group will be to start finalising arrangements for a child health forum to which clinicians, interested organisations, consumers and their families/whanau will be invited – the outcome of this event and the brainstorming and discussions that will occur there will form the basis of the work plan which the child health district group will oversee.

Mental Health and Addictions and the Cancer District Group

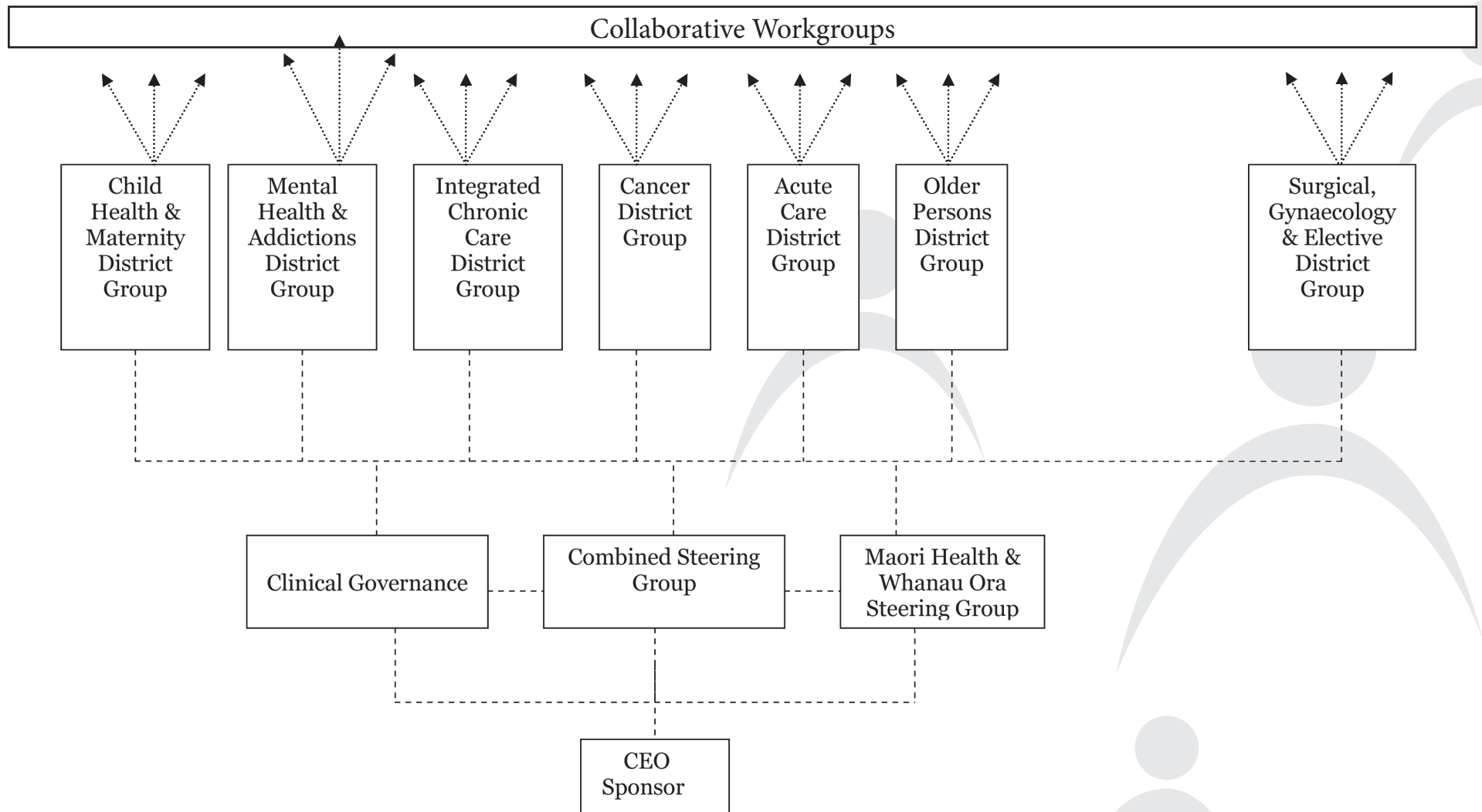
These groups are in the initial set up phase with the nomination process yet to occur. So if you are interested please watch this space.

If you would like to register your interest in a particular district group or would like to be on a clinical network mailing list please email: katherine.gibbs@midcentraldhb.govt.nz.

Working together for better health

Supported by MidCentral District Health Board

Conceptual Framework for MidCentral District's Clinical Networks:



Working together for better health

Supported by MidCentral District Health Board